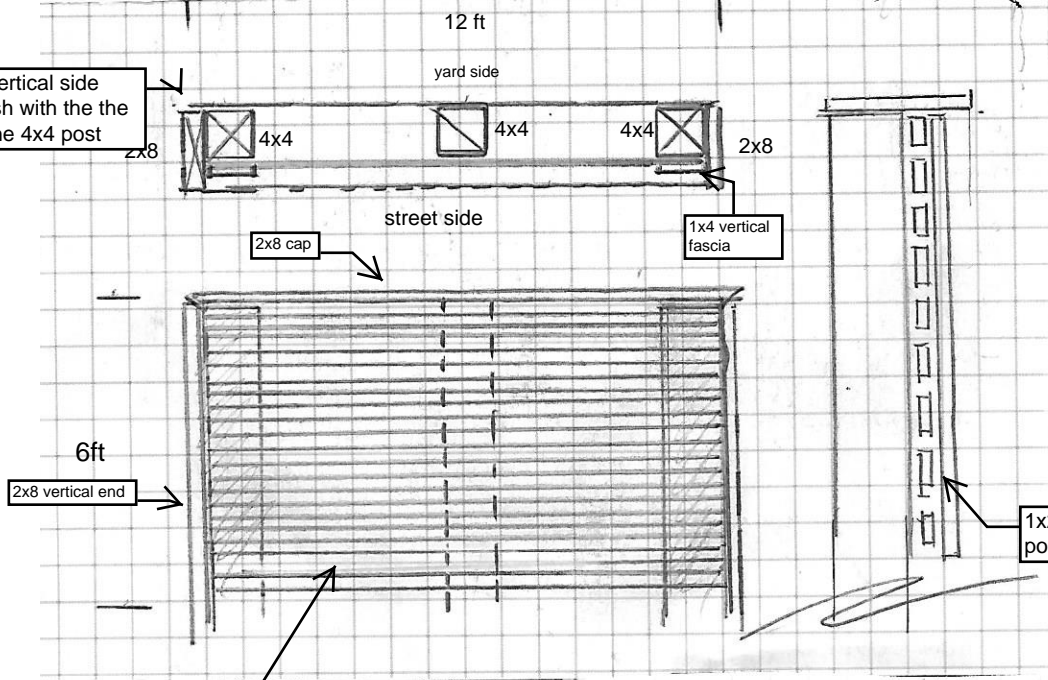




1508 8 Ave SE
Nina, Todd
(Vintage Gardens)

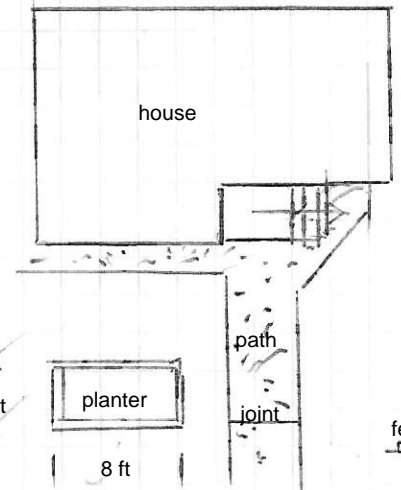
2x8 cap and vertical side pieces are flush with the back face of the 4x4 post



Fence Screen

2x4 brace may need to be added if 6ft span is too far for the 1x2 horizontals

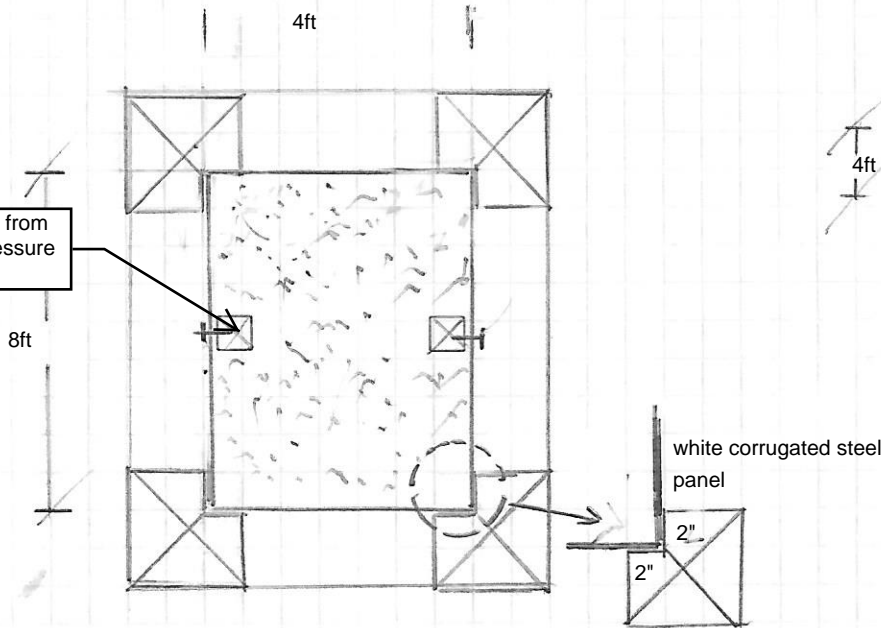
A



B

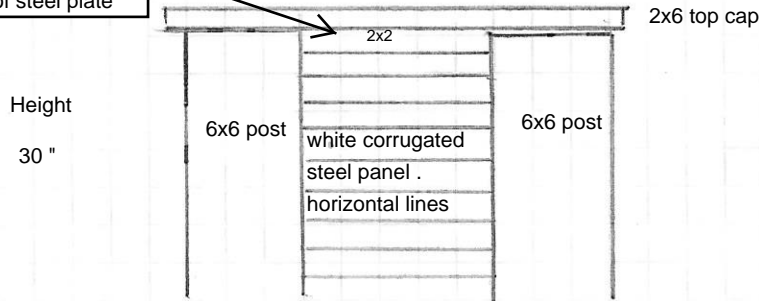
A

4x4 cedar to stop steel from flexing out from dirt pressure



Planter Top View
(NOT TO SCALE)

2x2 underneath 2x6 top cap to trim out top of steel plate



fence posts
4x4x10 cedar #3

planter posts
6x6x5 ft cedar #5
4x4x5 #2

redimix - #10

fence cap 2x8x 12 1
fence vertical 2x8x6 2
Fence horizontal 1-1/2 x 3/4 #45
Fascia 1x4x6 #2
stabilizer 2x4x6 #2